

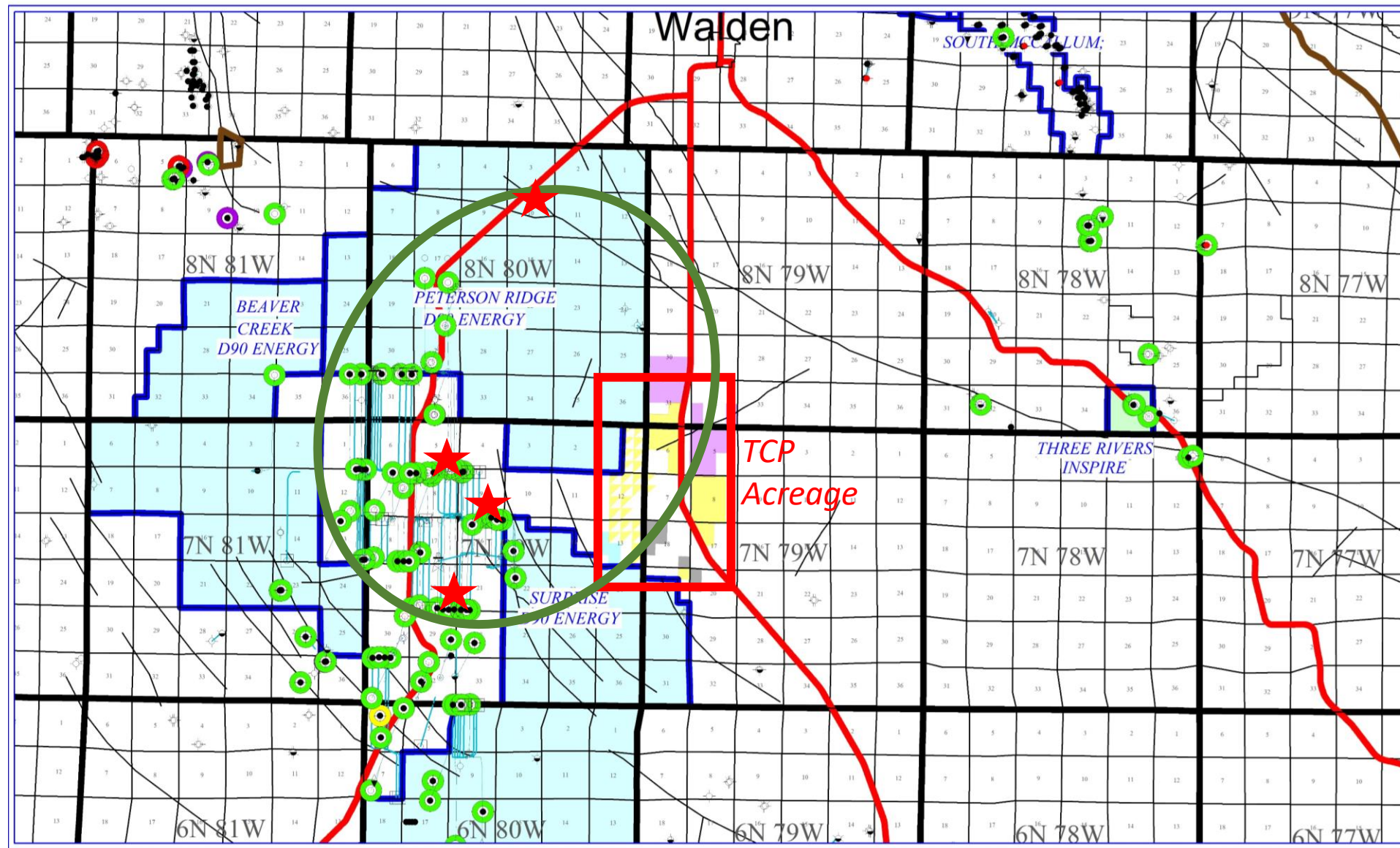
Colorado – Walden Prospect

North Park Basin

Acres: 1,392.61 Gross / 1,232.79 Net
84% NRI

April 2024

Offset to Active Niobrara Drilling in Area



faults from CO Faults, USGS Geologic Map Database
Well and Unit data from COGCC
— Colorado Paved Highways

Leases

- Three Crown
- Colorado Energy Minerals
- D90 Energy (Gondola/Fulcrum)
- Woodbury Resources

Producer

- Shannon
- Niobrara
- Frontier
- Permit
- Drilling – D90 Niobrara

Federal Exploratory Units

- Boundary
- D90 Energy Operated
- Inspire Operated



THREE CROWN PETROLEUM LLC

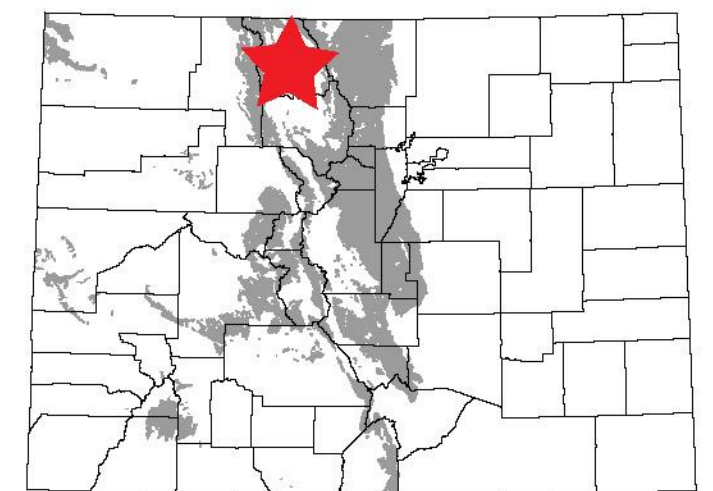
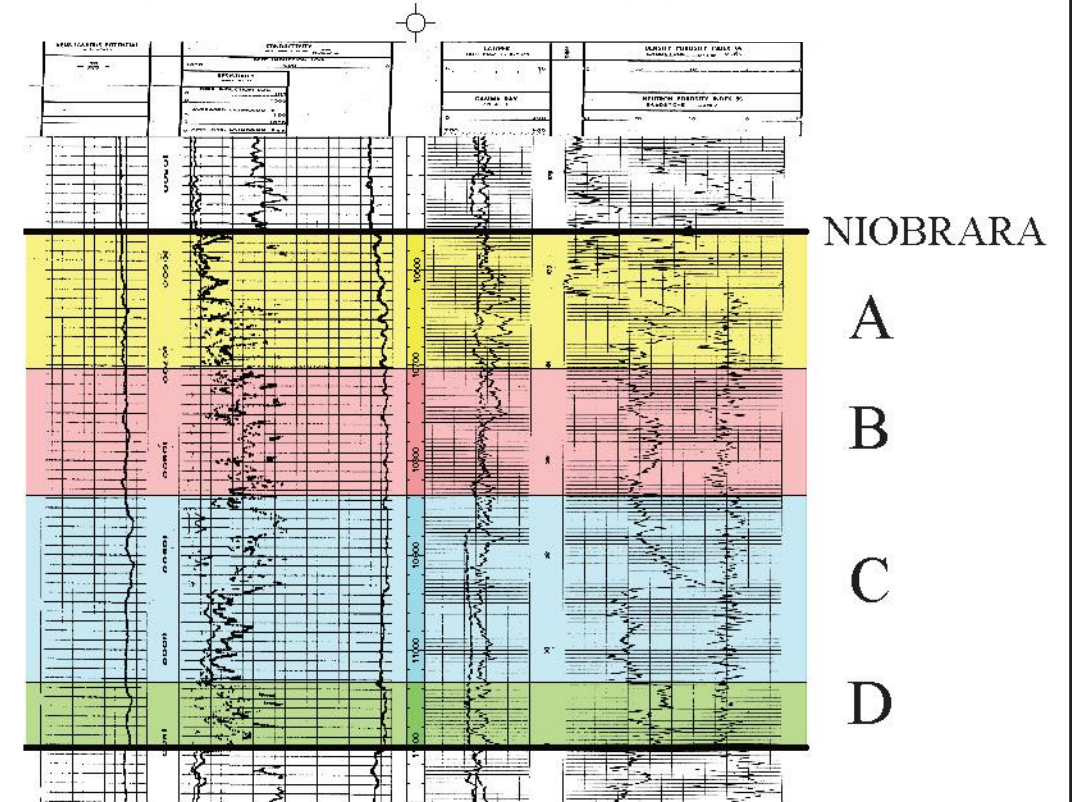
P.O. Box 774327
Steamboat Springs, CO 80477
970-756-4747
hcooper@threecrownpetroleum.com
www.threecrownpetroleum.com

- Multiple horizontal target zones
- Four stacked zones in Niobrara
- Sussex, Shannon and Frontier
- More liquid rich due to geology
- Avg. Niobrara Log Derived TOC
 - S32 T8N R78W: 1.49
 - S24 T8N R80W: 3.39
- Tmax of acreage ~ low 440s °C
(from Charzynski, 2010)

High potential of natural fractures

Testing of Niobrara wine rack development styles including 15 wells per section equivalent pattern - no observed interference; drilling moving north and east

Federal 1-24, 57-06071, S 24 T8N R80W



COLORADO