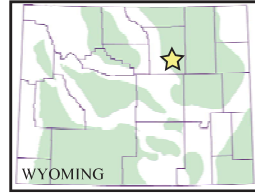


Powder River Basin Mineral Sale



Nine Producing Pay Zones

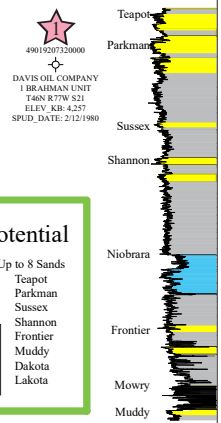
Johnson County, Wyoming
 Net: 4,614 acres Gross: 9,845 acres

February 2024



Contact Howard Cooper
 970.756.4747
 hcooper@threecrownpetroleum.com

ACRES		STATUS	LOCATION
Gross	Net		
6,312	2,988	OPEN	Range 79
3,533	1,626	HBP	Ranges 76, 77 & 78

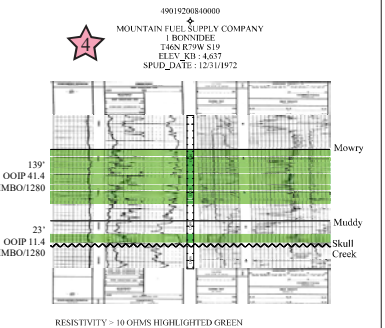
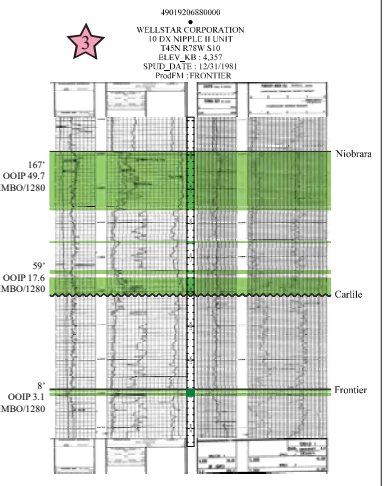
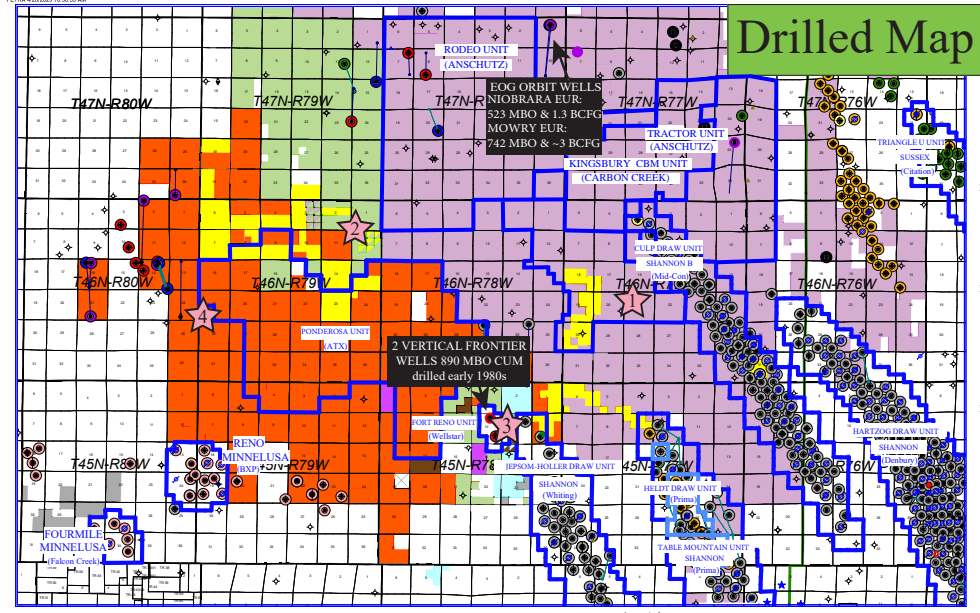
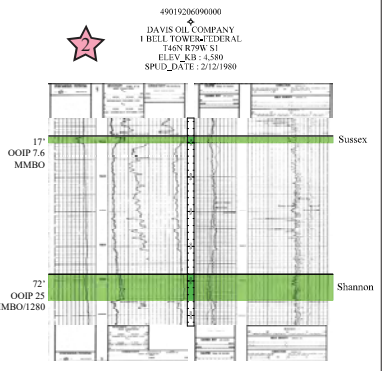
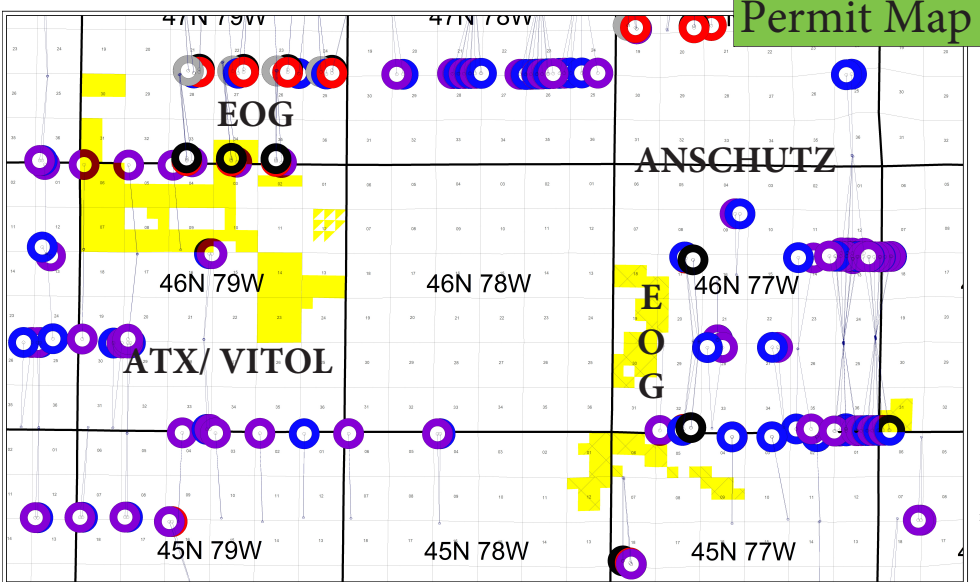


Stacked Potential

2 Source Rocks
 Niobrara
 Mowry

Up to 8 Sands
 Teapot
 Parkman
 Sussex
 Shannon
 Frontier
 Muddy
 Dakota
 Lakota

Potential Reserves
 Shannon - 4 MMBO / 4 Wells
 Niobrara - 1.2 MMBO / 4 Wells
 Frontier - 6 MMBO / 4 Wells
 Mowry - 40 MMBO & 14 BCFG / 4 Wells



UNIT BOUNDARY

LEASES

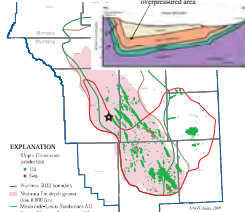
- ATX / Vitol
- EOG
- EOG / Anschutz, et al.
- Kirkwood
- Whiting
- K2T2
- Wellstar

MINERALS FOR SALE

- TCP

FORMATION

- TEAPOT
- PARKMAN
- SUSSEX
- SHANNON
- NIOBARRA
- FRONTIER
- MOWRY
- MUDDY
- MINNELUSA



Acreage located in Powder River Basin (PRB) of NE Wyoming. Multiple stacked horizontal targets along with deeper vertical drilling targets in Muddy and Minnelusa. Recent permitting and drilling activity in area. PRB has seen successful horizontal developments within reservoirs with vertical dry holes and improved production with newer completions.

Coalbed methane wells not shown.